

proudly announces a new model as an addition to its line of fine cars

ENGINE: Special 6-cylinder 3.8 litre XK engine. Twin S.U. type H.D.6 horizontal carburetors with electrically controlled automatic choke, and twin exhaust system. Develops 225 b.h.p. at 5,500 r.p.m. 70° twin overhead high lift camshafts driven by two-stage roller chain. 3.42 in. bore x 4.17 in. stroke. Cubic capacity 3,781 c.c. (230.6 cu. ins.). Compression ratio 8:1. Cooling by pump and fan with by-pass thermostat control. Forced lubrication by submerged pump system incorporating full-flow filter. High grade chrome iron cylinder block. Cylinder head of high tensile aluminum alloy with hemispherical combustion chambers, developed from "C" and "D" type racing heads. Aluminum alloy pistons. Steel connecting rods. 2 3/4" diameter counterweighted crankshaft carried in seven large steel-backed precision bearings.

TRANSMISSION: (A) **MANUALLY OPERATED GEARBOX WITH OVERDRIVE.** Four-speed single helical synchromesh gearbox. Centrally positioned gear-shift lever. Gear ratios: 1st and reverse, 12.73; 2nd, 7.01; 3rd, 4.84; 4th, 3.77; Overdrive 2.93. Borg & Beck 10" single dry-plate clutch with hydraulic operation. Hardy-Spicer propeller shaft. Hypoid rear axle. (B) **AUTOMATIC TRANSMISSION.** Borg-Warner Automatic Transmission with driver-controlled intermediate gear. Gear ratios: Low range from 8.16 to 17.6; intermediate range from 5.08 to 10.95; top (direct drive), 3.54. Hardy-Spicer propeller shaft. Hypoid rear axle. Gear selector mounted on steering column.

SUSPENSION: Independent front suspension incorporating semi-trailing wishbones and coil springs with telescopic shock absorbers. Trailing link rear suspension by cantilever semi-elliptic springs, radius arms and telescopic shock absorbers.

WHEELS AND TIRES: Pressed steel bolt-on disc wheels fitted with Dunlop 6.40 x 15 ins. low pressure tires. Spare wheel and tire. Center lock wire wheels available as optional extra.

FUEL SUPPLY: 14 1/2 gallons tank capacity. S.U. electric pump.

ELECTRICAL EQUIPMENT: Lucas 12-volt battery. 64 amp/hour at 10 hour rate with current voltage control. Ventilated dynamo. Sidelamps with driver-visible ruby glass inserts to warn of bulb failure faired into tops of front fenders. Headlamps controlled by foot operated dimmer-switch. Separate lever for actuating headlamp flashing. Separate stop, tail, direction and reflector units mounted in a single assembly. Reversing lamp. Self-cancelling, flashing direction indicators with warning lights. Instruments and labelled switches illuminated by internal flood lighting controlled by a two-position dimmer-switch. Concealed map reading lamp. Twin courtesy lights above the center door pillar and twin interior lights in the corners of the rear compartment. Cigar lighter with luminous socket. Twin-blended note horns. Twin-blade, two-speed, self parking, windshield wipers. Electrically operated windshield washers. Combined handbrake and brake fluid level warning light.

HEATING AND DEMISTING: New high output heating system incorporating windshield demisting. Separate heating duct to rear compartment. Two-speed fan controlled by switch on instrument panel.

SPECIFICATIONS-3.8 SEDAN

BODY: All steel four-door five-passenger sedan. Integral body-chassis construction. Large windshield with slim pillars and semi-wrap-around rear window for maximum visibility front and rear. The semi-wrap-around windshield does not interfere with ease of entry and exit. Wide view rear mirror. Special door handles incorporating push buttons designed to prevent freezing up in extremely cold conditions. Seats upholstered in finest quality Vaumol leather hide over deep Dunlopillo foam rubber cushions. Front bucket seats adjustable for height and reach. Flush fitting occasional tables in rear compartment. Polished figured walnut instrument panel features 5 ins. revolution counter with electric clock and 5 ins. speedometer positioned directly in front of driver and separate instruments for oil pressure, water temperature, fuel gauge with warning light and ammeter. Instrument panel also contains a central map compartment and, on the passenger's side, a glove compartment with an interior light and lockable lid. Separate housing beneath instrument panel contains a radio and speaker (optional extra) together with the heater controls and a very large ashtray. When no radio is fitted, the speaker grille is retained and the radio control panel aperture is blanked off with an escutcheon. Two-spoke steering wheel and semi-circular horn ring. Front and rear doors incorporate large pockets and armrests which, on the rear doors, also contain ashtrays. Central folding armrest in rear compartment. Flush fitting sun vizors. Deep pile carpets over thick felt underlay. Heavy duty wrap-around bumpers with over-riders.

BRAKES: Dunlop bridge-type 4-wheel disc brakes, featuring quick change pads, vacuum servo assisted. "Pull Up" handbrake mounted at floor level. Disc diameter, 11 1/4".

STEERING: Burman re-circulating ball-type steering with 17" diameter adjustable two-spoke steering wheel. 4.3 turns from lock to lock. Power assisted steering, optional extra.

LUGGAGE ACCOMMODATION: Ample luggage accommodation is provided in a capacious rear trunk with an automatic light. 13 1/2 cubic feet of luggage space available.

SPARE WHEEL AND TOOLS: The spare wheel is carried beneath the trunk floor in a separate compartment and is readily accessible. Kit of tools, jack and wheelbrace.

JACKING: Exterior jacking posts, on both sides which enable the car to be lifted with a minimum of effort by means of the jack provided.

PRINCIPAL DIMENSIONS: Wheelbase, 8 ft. 11 3/8 ins.; track front, 4 ft. 7 ins.; track rear, 4 ft. 5 3/8 ins.; overall length, 15 ft. 3/4 ins.; overall width, 5 ft. 6 3/4 ins.; overall height, 4 ft. 9 1/2 ins.; ground clearance, 7 ins.; turning circle, 33 ft. 6 ins.; dry weight, 3,136 lbs. approx.

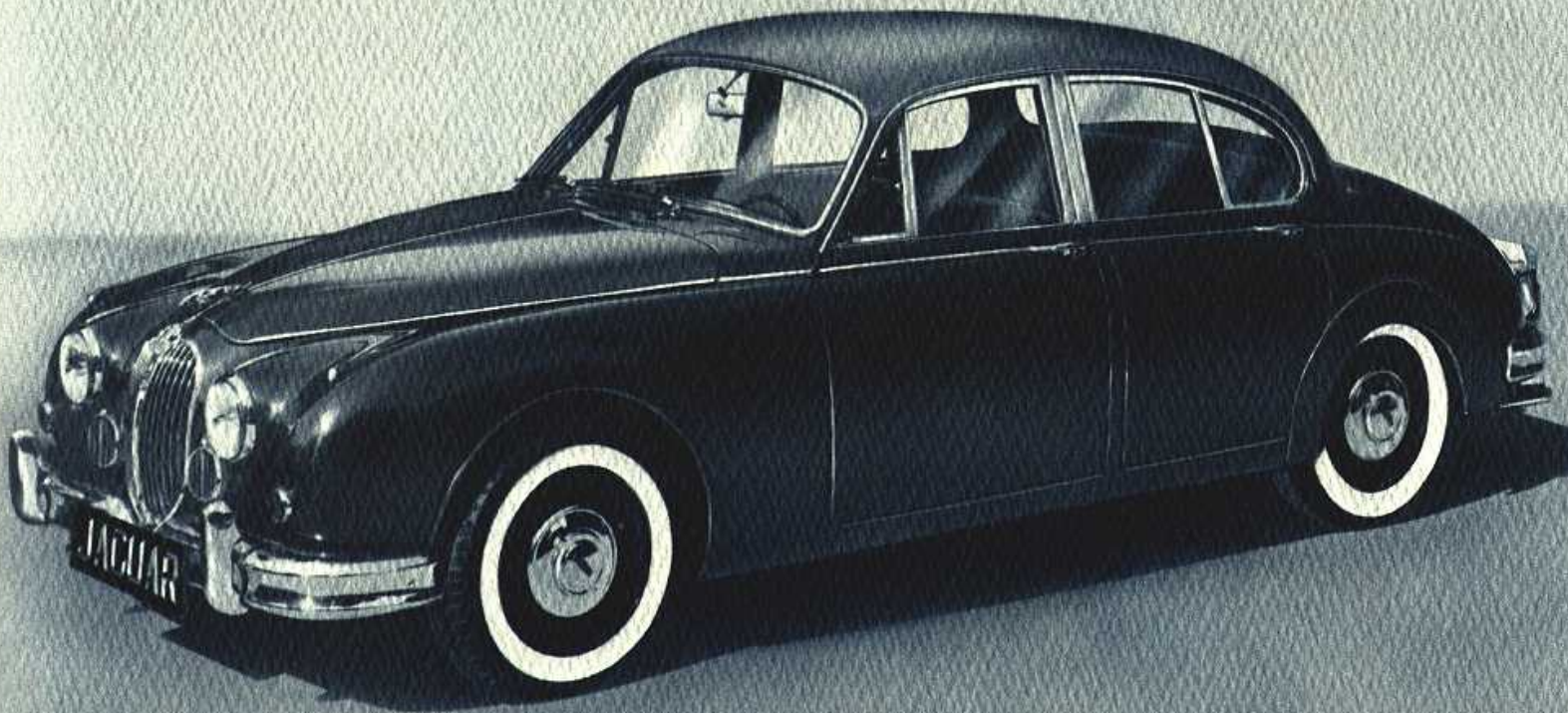
The issue of this catalog does not constitute an offer. Jaguar Cars Ltd. reserves the right to amend specifications at any time without notice.

JAGUAR CARS INC., 32 EAST 57TH STREET, NEW YORK 22, N. Y. North American Headquarters for JAGUAR CARS LTD., COVENTRY, ENGLAND

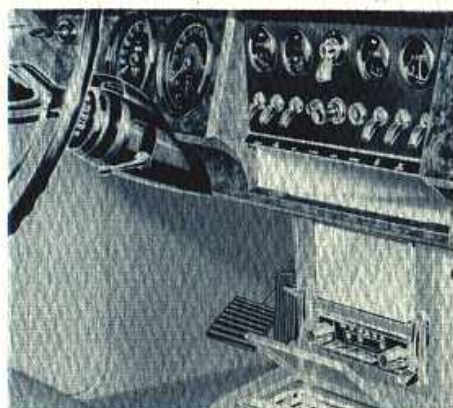
PRINTED IN U. S. A. BY POLAR PRESS LTD.

Five-Passenger Sedan

The 3.8 Sedan is one of the most versatile automobiles ever built. It sums up luxury touring in a high-performance car that defies comparison, bringing together without compromise the responsiveness and handling of the true sports car, with the convenience of a four-door, five-passenger family sedan. In the 3.8, the renowned Jaguar XK engine, four-wheel Dunlop disc brakes, dramatic acceleration and speeds in excess of 120 miles-per-hour are combined with enduring performance, safety and Jaguar's well-known prestige standards in design and fitments. These are reasons in abundance why a noted automotive writer has said of the 3.8 Sedan, "It has no exact American counterpart!"



The New Jaguar 3.8



Polished walnut instrument panel; housing for radio, speaker, heater controls and ashtray.



Walnut flush-fitting occasional tables; soft leather upholstery over foam rubber.



Ample luggage compartment — 13½ cubic feet capacity, with automatic interior light.

OUTSTANDING FEATURES OF THE 3.8 SEDAN

- ▶ Power assisted steering, as an optional extra.
- ▶ 3.8 Litre engine.
- ▶ Entirely new dashboard layout. It includes revolution counter and speedometer directly in front of the driver, and separate instruments for oil pressure, water temperature, fuel gauge and ammeter.
- ▶ Dunlop disc brakes, featuring quick change pads.
- ▶ Large windshield with very slim pillars and wrap-around rear window.
- ▶ Front seats adjustable for height as well as reach.
- ▶ Automatic transmission, featuring a finger-tip control by which intermediate gear may be held indefinitely, or four-speed and reverse manual shift with overdrive.
- ▶ New high output heating and defrosting system, with separate duct to rear compartment, operated by two-speed fan, controlled by switch on instrument panel.
- ▶ Flush fitting occasional tables in rear compartment.
- ▶ Two-spoke adjustable steering wheel with semi-circular horn ring.
- ▶ Separate housing below instrument panel containing a radio and speaker, optional extra, together with heater controls and a very large ash tray.