

X J 6
3-2
S





Electrically adjustable seats as shown are available as an extra-cost option.

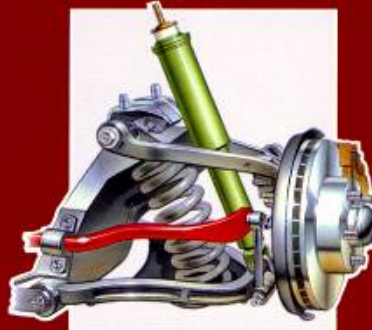
XJ6 3.2 S

Every Jaguar car immediately proclaims that its owner is someone who values stylish distinction as much as sheer high performance motoring. The unique Jaguar combination of smooth, elegant lines and luxurious interior immediately sets the car and its owner apart from the crowd.

Nevertheless, there are some motorists who demand a car which is even more individualistic; one which is tailored precisely to reflect their own self-confident modern persona.

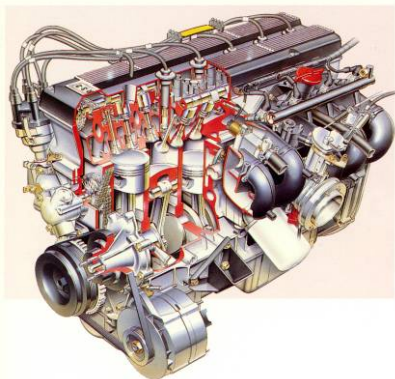
Jaguar designers have therefore developed the new XJ6 3.2S, combining all the basic qualities of the successful XJ6 with many specially tailor-made features which are carefully integrated into a coherent package. This gives the new car its own very individual character - strikingly sporting, yet still with that unmistakable Jaguar style.

Externally, this special character is immediately apparent. The colour-keyed radiator grille vanes, headlamp surrounds and spoiler, together with the silver Jaguar badge of a cat's head and fitted foglamps, indicate that this is a car for the motorist who enjoys driving for its own sake. This impression is confirmed by the sporty 7 x 16 in. (18 x 41 cm) 5-spoke alloy wheels, which have cat's head badges against a ruby-finish background, and are shod with P4000 tyres. The exterior mirrors are colour-keyed, and further distinction is provided by single upper and double lower side stripes, plus a '3.2S' badge below the side indicator repeater lamp, matching the ruby wheel badges; matt black window surrounds also contribute to the sleek exterior style of the new Jaguar XJ6 3.2S.





Heated headlamp power wash as shown is available as an extra-cost option.

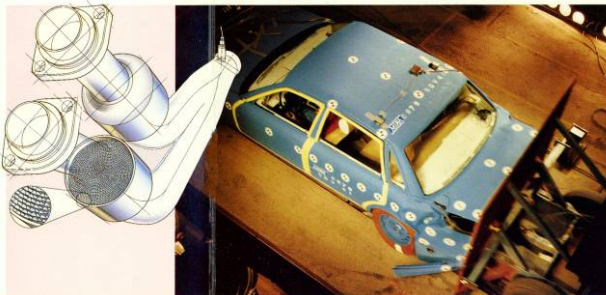


The XJ6 3.25 driver is provided with an attractive array of traditional analogue instruments, set against a modern black surround. The 4-spoke leather-rimmed steering wheel, mounted on a 5-position tilt-adjust column, contains a Supplementary Restraint System (SRS) in the form of an airbag which



automatically inflates in a fraction of a second in the event of a severe frontal impact. This is one of several safety and security features on the XJ6 3.25, which include electronic anti-lock braking, energy-absorbing front and rear structural members, anti-intrusion door beams, a steel bulkhead isolating the fuel tank, and a versatile anti-theft security system.

The 3.2 litre six-cylinder double-overhead-camshaft engine, with low-loss catalytic converter, develops 200 BHP (149 kW) at 5250 rev/min, giving a top speed of 131 mph (210 km/h) where conditions and legislation permit. This is with the standard 4-speed automatic gearbox, which has an improved 'J' gate selector with a wooden gear knob, and gearshift interlock. A 5-speed manual box is available as a no-cost alternative.



To match the sporting character of the new car, the suspension system has been modified and developed to give tauter and extremely agile handling, without loss of the ride comfort for which Jaguars are renowned. Included in this special system, which is unique to the XJ6 3.25, are up-rated dampers and a new stiffer anti-roll bar.

The performance and reliability of Jaguars has been proven by an outstanding record in motorsport, recent years bringing overall season wins in the European Sports Car Championship on three occasions, and outright victory in the Le Mans 24-Hour race in both 1988 and 1990. This reflects the thoughtful process by which Jaguars are developed and manufactured. Advanced facilities such as computer-aided-design and robotics are employed where they will achieve the best accuracy and optimum benefits, but hand-craftsmanship is still used where only human skill can produce the quality required.



Electrically adjustable seats as shown are available as an extra-cost option.

Each and every engine and completed car is stringently tested, finishing with an exhaustive road test. The company's faith in its products is confirmed by a comprehensive 3-year, 60,000 mile (100,000 km) warranty, 6-years' anti-corrosion cover, 3 years' cover against surface corrosion, and full RAC Incident Management.



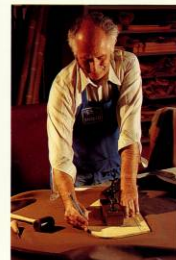
The smooth good looks extend to the rear of the new car; devoid of chrome and with a stylish colour-keyed infill panel surrounding the number plate, it is discreetly badged merely '3.2S'. The rear lamps are either dark grey or red, depending on which of the optional paint colours is chosen. Four metallic finishes and two solid paint colours are available in the combinations shown in the Specification section overleaf. Similarly, the alloy road wheels and side stripes are finished in either eggshell or silver, as appropriate to the chosen paint colour.

The striking interior of the XJ6 3.2S complements the classic modernity of the exterior. Special seats, hand-trimmed with horizontally fluted embossed leather facings, have the finishing touch of mulberry contrast stitching, matching the door furniture and casings, and the centre console. High quality cloth upholstery is alternatively available, at no extra cost. The fascia and door top rolls, handbrake grip and gearshift surround are all colour-keyed. The carpets, too, are carefully chosen to complement the trim colour.

A further very distinctive touch is the hand-cut, hand-polished rosewood-stained maple veneer of the fascia, centre console and door cappings, matching the gear knob, and further complementing the 'ruby' tone of detail items such as the exterior badges and upholstery stitching.

Despite the exclusive appeal of the new XJ6 3.2S, with all its special features, it clearly demonstrates the very high value for money which Jaguars have always represented; so much so, that it is available at a price which comes within the limit imposed by current British 'benefit in kind' taxation.

Truly, the Jaguar XJ6 3.2S presents sporting modern motorists with a unique opportunity to express their individuality.



SPECIFICATIONS

XJ6 3.2 S

ENGINE TYPE	AJ6 in line 6 cylinder Alloy head/block DOHC 4 valves/cylinder	
Displacement (cm ³)	3239	
Bore x Stroke (mm)	91 x 83	
Compression ratio	9.75:1	
Maximum power DIN BHP (kW) @ rev/min	200 (149) @ 5250	
Maximum torque DIN lb.ft. (Nm) @ rev/min	220 (298) @ 4000	
Combustion chambers	Pent roof	
Ignition system	Lucas electronic	
Fuel system	Lucas electronic injection	
Fuel grade	95 RON unleaded	
TRANSMISSION TYPE	ZF 4 speed automatic	
Top gear ratio	0.73:1	
Final drive ratio	4.09:1	
MPH per 1000 rev/min in top gear	25.5	
WHEEL TYPE/SIZE	Alloy 7" x 16"	
Tyre size	225/60 ZR16	
DRAE COEFFICIENT	0.36	
BRAKING SYSTEM	Hydraulic power assisted 4 wheel disc brakes ventilated at front. 4 wheel sensing anti-lock braking system with yaw control. Safety split front and rear circuits with fluid level and anti-lock failure warning. Hand operated mechanical parking brake on rear wheels.	
STEERING	Rack and pinion power assisted steering with 2.8 turns lock to lock. Energy absorbing steering column with 5 position tilt adjustment and (SRS) airbag steering wheel. Turning circle 40ft 8in (12.4m) between kerbs.	
SUSPENSION - FRONT	Fully independent with unequal length upper and lower wishbones arranged to provide anti-dive effect under braking. Steel coil springs, telescopic dampers and anti-roll bar.	
- REAR	Fully independent with hubs located at lower ends by wishbones and driveshafts acting as upper links. Wishbones designed for anti-squat and anti-lift under acceleration and braking. Concentric steel coil springs and dampers.	
BODY CONSTRUCTION	4 door saloon. All steel monocoque construction with front and rear crumple zones including front crush tubes. Wrap around protective bumpers.	
PAINT AND PROTECTION	Box sections and closed members hot wax injected. Cathodic electro-coat. Clear over base paint process with automated electrostatic application of primer/sealer and clear coats. Twin colour coats. Bituman wax underseal.	

PERFORMANCE (manufacturer's estimates)	Automatic	Manual
Acceleration - 0-60mph (0-100 km/h) (s)	9.5 (10.1)	8.5 (9.0)
Top speed - mph (km/h)	131 (210)	132 (211)
ECONOMY		
Urban cycle - mpg (litres/100km)	19.2 (14.7)	18.5 (15.3)
56mph - mpg (litres/100km)	35.3 (8.0)	37.7 (7.5)
75mph - mpg (litres/100km)	30.1 (9.4)	31.0 (9.1)

WEIGHT

Maximum kerb weight - lb (kg) with options	4023 (1825)
Gross weight - lb (kg) maximum permissible	4949 (2245)

The fuel economy figures were obtained from tests carried out in line with the Passenger Car Fuel Consumption Order 1983.

EXTERIOR PAINT	TRIM	STITCHING	FACIA	CARPET	VEENER	TAIL LAMPS	WHEELS	UPPER/LOWER STRIPE
Flamenco	Magnolia	Mulberry	Barley	Ruby	Rosewood	Red	Eggshell	Eggshell
Flamenco	Doeskin	Mulberry	Doeskin	Ruby	Rosewood	Red	Eggshell	Eggshell
British Racing Green	Magnolia	Mulberry	Barley	Ruby	Rosewood	Red	Eggshell	Eggshell
British Racing Green	Doeskin	Mulberry	Doeskin	Ruby	Rosewood	Red	Eggshell	Eggshell
Kingfisher	Magnolia	Mulberry	Barley	Ruby	Rosewood	Red	Eggshell	Eggshell
Kingfisher	Doeskin	Mulberry	Doeskin	Ruby	Rosewood	Red	Eggshell	Eggshell
Kingfisher	Savile	Mulberry	Mid Grey	Savile	Rosewood	Red	Eggshell	Eggshell
Silver Frost	Savile	Mulberry	Mid Grey	Savile	Rosewood	Grey	Silver	Gunmetal
Diamond Blue	Savile	Mulberry	Mid Grey	Savile	Rosewood	Grey	Silver	Gunmetal
Black	Savile	Mulberry	Mid Grey	Savile	Rosewood	Grey	Silver	Gunmetal

STANDARD EQUIPMENT

MECHANICAL

- Adjustable tilt steering column
- Anti-lock braking system
- Auto transmission - 4 speed
- Cast alloy 7" x 16" wheels with 225/60 ZR 16 tyres
- Catalyst exhaust system - stainless steel
- Gearshift interlock (with automatic transmission)
- Power boost assisted 4 wheel disc brakes
- Power assisted steering
- Supplementary driver airbag
- Uprated dampers/anti roll bar

EXTERIOR

- Colour keyed radiator grille vanes, door mirrors and boot infill panel
- Electric aerial
- Electrically adjustable and heated door mirrors
- Electrically heated windscreen washers
- Four circular halogen headlamps
- Front fog lamps integrated into spoiler
- Heated rear window with timer
- Rear fog lamps
- Single upper and twin lower coachlines
- Two speed windscreen wiper with variable intermittent mode and programmed wash wipe
- Unique wheel, boot, grille and wing badges

INTERIOR

- Birds Eye Maple veneer facia, console, door cappings and switch packs
- Black instrument pack mask
- Central locking, including boot and fuel filler, by key and remote control
- Colour-keyed facia and door top rolls
- Colour-keyed leather handbrake grip, gear shift surround and gear knob (manual)
- Contrast stitching on seats, door furniture and centre console
- Custom designed high power audio system with Radio Data System (RDS) and 8 speakers
- Digital clock
- Door key operation closes windows/sunroof
- Electric remote boot lid release
- Electric windows with "one touch open" on driver's window
- Front and rear seat head restraints with manual height and tilt adjust
- Front map reading light and twin front interior lights
- Heater with air recirculation facility
- Illuminated door and console switch packs
- Inertia reel front and rear seat belts and rear centre lap belt
- Kerb illumination lamps on all doors
- Laminated windscreen and tinted glass
- Leather seat facings with embossed finish on horizontal flutes
- Lockable illuminated glovebox
- Manual front seats with lumbar adjustment and electric height adjust
- "Panic" switch for central locking/unlocking and window/sunroof close
- Passenger grab straps
- Recessed rear seat belt buckle stowage
- Security system with remote control
- Trip computer with cyclic display control on left hand column stalk
- Twin sunvisors with illuminated vanity mirrors
- Web locking on front seat belts
- Wooden gear knob (auto)
- 4 spoke steering wheel with horn pushes on upper spokes

OPTIONAL EQUIPMENT AT EXTRA COST

MECHANICAL

- Cruise control
- Limited slip differential
- Ride levelling rear suspension

EXTERIOR

- Electric steel sunroof
- Heated headlamp power wash
- Heated front windscreen (only available with air conditioning)

INTERIOR

- Air conditioning
- CD Autochanger
- Heated front seats (with electric seats)
- Reading lamps in rear pillars
- Rear window sunblinds
- Sheepskin passenger footwell rugs
- Ten way electrically adjustable front seats and head restraints with driver's "entry" button, 2 position driver memory including exterior mirrors, electric lumbar support
- Ultrasonic intrusion sensing security system

NO COST OPTION

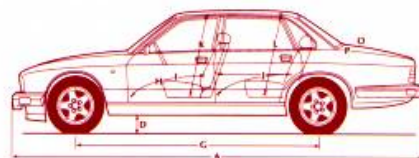
- Manual transmission - 5 speed
- Sculptured fabric seat facings with matching leather borders

* Items standard on XJ6 3.2 S which are additional to XJ6 standard specification.

DIMENSIONS

XJ6 3.2 S

A Overall length in (mm)	196.4 (4988)	H Maximum legroom - front driver in (mm)	41.8 (1062)
B Overall width including mirrors in (mm)	79.1 (2015)	I Maximum legroom - front passenger in (mm)	45.1 (1145)
C Overall width excluding mirrors in (mm)	70.6 (1793)	J Minimum legroom - rear (outboard) in (mm)	31.2 (805)
D Ground clearance - minimum at GVW in (mm)	54.3 (1380)	K Maximum headroom - front in (mm)	38.7 (983)
E Track width - front in (mm)	47.1 (1200)	L Maximum headroom - rear in (mm)	36.5 (928)
F Track width - rear in (mm)	59.1 (1500)	M Shoulder width - front in (mm)	57.5 (1460)
G Wheelbase in (mm)	113.0 (2870)	N Shoulder width - rear in (mm)	57.6 (1463)
		O Boot volume cu. ft. (m ³) - usable	12.24 (0.35)
		P Fuel tank capacity imp. gal. (litres)	19.0 (86.4)



Note: Dimensions refer to a standard car but may vary marginally from car to car due to design and production tolerances. The nominal condition has been used wherever possible. Please consult your dealer for details of changes associated with option fitting.

Important Notice

Jaguar Cars Limited is constantly seeking ways to improve the specification, design and production of its vehicles and alterations take place continually. Whilst every effort is made to produce up to date literature, this brochure should not be regarded as an infallible guide to current specifications, nor does it constitute an offer for the sale of any particular vehicle.

Distributors and dealers are not agents of Jaguar Cars Limited and have absolutely no authority to bind Jaguar Cars Limited by any express or implied undertaking or representation.

Designed & Produced by Warwick, Coventry, England. Reproduced by Qualitech Photo Litho, Stockport, Cheshire England. Printed in England by Wood Mitchell & Co. Limited, Stoke-on-Trent England.



JAGUAR
JAGUAR CARS LIMITED, BROWNS LANE, ALLESLEY,
COVENTRY CV5 9DR ENGLAND

XJ6 3.2 S 93 English
XJ6 3.2 S / 93 E